

VOLUSIA COUNTY, FLORIDA

Seeks competitive candidates for the position of:

PUBLIC PROTECTION DIRECTOR

About Volusia County

Location/Area Attractions

Volusia County is bordered on the west by the historic St. Johns River, and by the Atlantic Ocean to the east. Roughly the size of Rhode Island, Volusia County is situated 50 miles northeast of Orlando, 60 miles north of the Kennedy Space Center and Cape Canaveral, and 89 miles south of Jacksonville. The Volusia County Tourism Authority promotes the area as being the "Fun Coast," as the local area code (386) spells out the word "fun."



The 47 miles of Atlantic Ocean beaches are a world class playground with beach-front cities such as: Daytona Beach, Ormond Beach and New Smyrna Beach. Rich in diversity, culture and the arts, Volusia County is home to the Daytona Beach Symphony Society, Daytona Beach Civic Ballet and Concert Showcase. Volusia County is also home to the world famous Daytona International Speedway (NASCAR racing). Volusia County is about an hours drive north of Disney World, Universal Studios and Sea World and is within a few hours drive of other beautiful major Florida cities and communities.

Cities

Volusia County is seated in DeLand. There are sixteen cities of various sizes and demographics in the County. They are: Daytona Beach; Daytona Beach Shores; DeBary; Deltona; Edgewater; Holly Hill; Lake Helen; New Smyrna Beach; Oak Hill; Orange City; Ormond Beach; Pierson; Ponce Inlet; Port Orange and South Daytona. The population of the unincorporated County is 115,000. The total 2007 County population was 517,851. The County's 2012 projected population is about 577,794.



About the Organization

Volusia County is a charter county under Florida law. The Florida Constitution provides for "Home Rule" county charter government when approved by the voters in a referendum election. Charter government enables the County to adopt laws without the need for prior authorization by the State Legislature. The people decide by local referendum election what county government organization will be most responsive to their needs.

The County operates under a Council/Manager form of government. Laws and policies are made by the voter elected seven-member County Council, five of whom are elected by district. All management and administrative duties are carried out by the County Manager who, along with the County Attorney, is appointed by and serves at the pleasure of the County Council.

Five council members are elected by district and one is elected at-large to staggered 4-year terms. The Chair is elected at large to a 4-year term. The Sheriff, Elections Supervisor and Property Appraiser are also elected officers of the County.

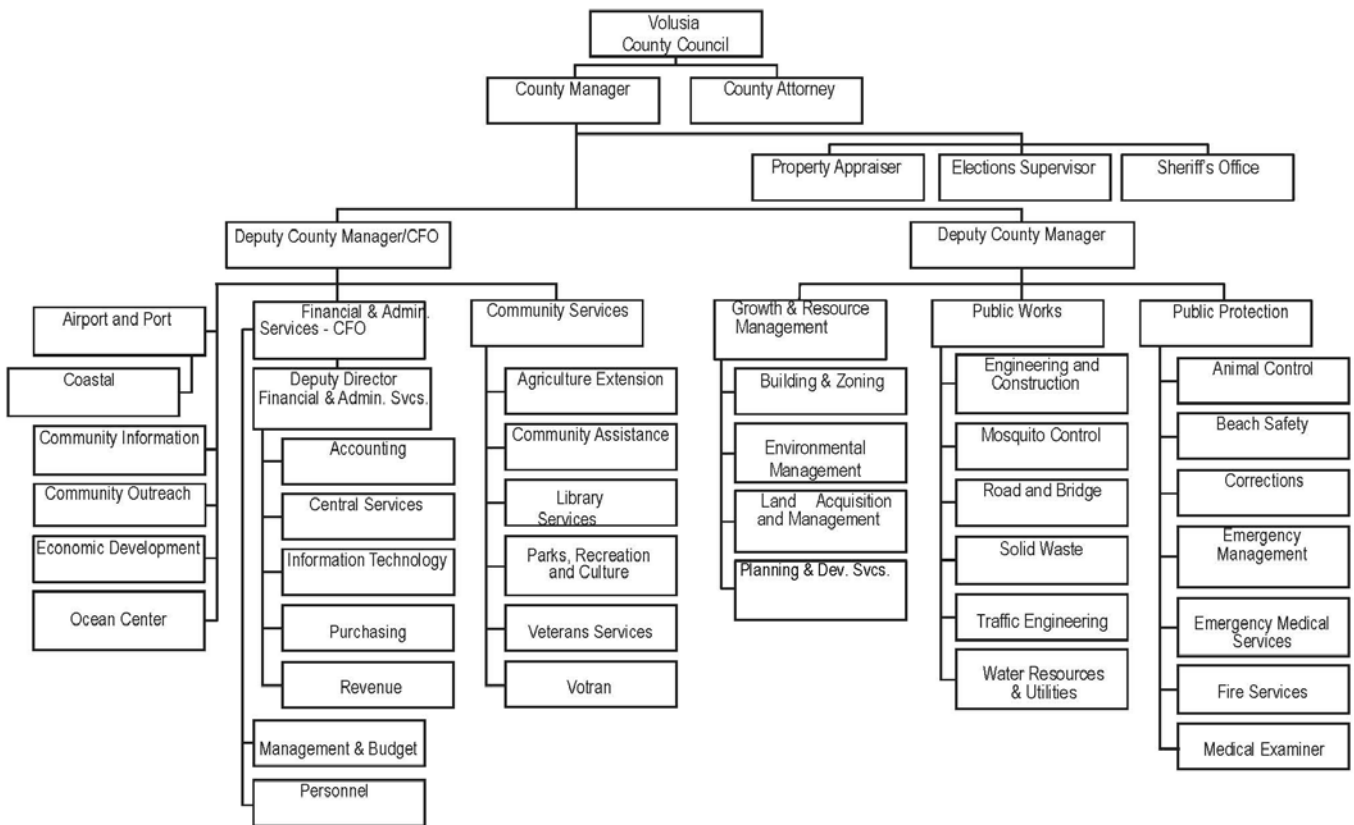
The County Manager appoints all other non-elected officers and manages and evaluates their work. This includes a wide variety of services organized into these functional groups: Airport and Port Services, Financial and Administrative Services, Community Services, Convention Center, Economic Development, Growth and Resource Management, Internal Auditing, Public Works, and Public Protection. The current County budget is about \$580M and there are about 3,100 County employees. Fire and Sheriff employees are unionized. Volusia County is known for its well-managed and highly stable government.

Demand for services continues to increase with the County's growing population. Despite the pressures of growth and the need for services, the County budget and major tax rates have increased modestly.

Volusia County Council Mission Statement: *"Engage in actions and policies that maintain and enhance public confidence in Volusia County Government."*



Volusia County Organizational Chart





PUBLIC PROTECTION DIRECTOR

About the Position

The Public Protection Department Director is responsible for the administrative work coordinating and facilitating the operation of the divisions assigned to the Public Protection Department: **Fire Services, Corrections, Emergency Management, Beach Safety, Medical Examiner's Office, Emergency Medical Services and Animal Control.** The Public Protection Department Director exercises direct supervision over division directors and indirect supervision over managers, supervisors, professional, skilled, unskilled, and administrative support staff. Responsibilities further include evaluation and development of recommendations to improve departmental administration, procedures, policies, and programs. Work performance is evaluated on the basis of results achieved.



Thomas C. Kelly Administration

Duties typically include:

- Coordinates and oversees activities of subordinate organizations to include budget preparation, service levels, missions, goals and objectives, personnel and operations.
- Oversees a \$93 million dollar operating budget and has a workforce of 698 employees to include 187 bargaining unit employees.
- Serves as chief advisor to the Deputy County Manager, County Manager and County Council on issues relating to public protection services.
- Participates as a member of an executive management team for union negotiations.
- Assists and advises the County Manager in developing short-term and long-term goals and objectives.
- Serves as liaison and County representative to inter-governmental agencies, advisory groups, state and federal agencies, internal divisions/organizations and citizen groups. Addresses media on high profile issues.
- Defines policies and directions for division directors.
- Ensures the efficient and economic delivery of services to the public and the internal customers. Determines service levels and standards provided by subordinate organizations. Develops and reviews initiatives to improve quality and effectiveness of services.

A Bachelor's degree in Business, Public Administration, Management, Criminal Justice, or closely related field, and a minimum of five (5) years of progressively responsible work experience as a senior manager in planning, organizing, and directing major phases of the operations and programs associated with the Public Protection Department. The *preferred* candidate will have an advanced degree (master or higher) and must have strong staffing/budgeting and emergency management experience. A comparable amount of education, training, or experience may be substituted for the minimum experience. The County offers an exceptional benefits package that includes FRS (Florida Retirement System), paid leave, health coverage, tax deferral options and partial tuition refund. The position offers a highly competitive salary: \$93,708 - \$ 139,464 DOQs. Closing: Subject to close without notice.

